

**DESIGN/
BUILD
CONSTRUCTION**
page 9

**JOB
SHOP
DIRECTORY**
page 4

UNDER CONSTRUCTION
page 14

PRSRVT STD
US POSTAGE
PAID
Toledo, OH
43601-9998
Permit # 348

CHANGE SERVICE REQUESTED

TIME SENSITIVE MAIL
MANUFACTURING & CONSTRUCTION NEWS
PO BOX 1206
MAJUMEE OH 43537

Lubrizol expands in Bowling Green



Lubrizol's expansion enables the company to produce more surfactants

The Lubrizol Advanced Material plant in Bowling Green recently underwent a multimillion-dollar expansion project. According to Justin McIntyre, Lubrizol Bowling Green plant manager, the expansion enables the company to produce more surfactants, which are the active cleansing agents in many soaps, shampoos, etc.

“Over the last year, in response to COVID, there has been growing interest in hygiene products, including the ingredients for soap products, which are produced at the site. The increase in demand meant we needed to expand our production capacity to serve our customers and end users more efficiently,” said McIntyre. “As a result of the pandemic, we’ve seen an increase in production and volume of product needed from our customers.”

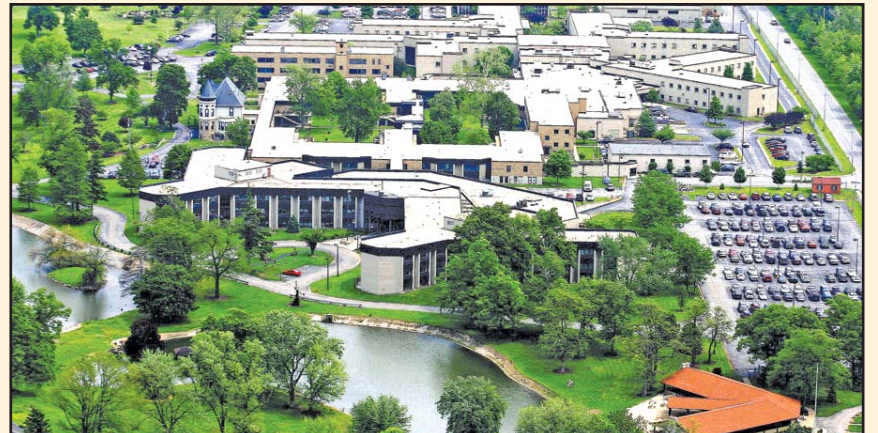
(...continued on page 3)

OVH set for \$2M communications center

Ohio Veterans Home (OVH) in Sandusky is set for a new communications center on its campus. The \$2 million project will have approximately 65% of the cost covered by a federally funded veterans affairs (VA) grant and the remaining 35% covered through a State grant.

“The Ohio Department of Veteran Services’ current communications center has outgrown the fast growing and rapidly changing communications world and a large number of man-hours are being spent by various departments to keep the outdated center running. Currently all the critical safety components and duties performed by radio dispatchers are housed in an area that is in need of improvement.”

(...continued on page 3)



Aerial view of Ohio Veterans Home in Sandusky

Toledo Edison implementing \$67M project



Toledo Edison's project has additional investment being placed in technology modernization and tree trimming

FirstEnergy and its Toledo Edison subsidiary are implementing its \$67 million expansion project aimed at supporting industrial and other customers in northwest Ohio. The project has a special focus on supporting the increased electricity needs of North Star BlueScope Steel for its \$700 million expansion project at its steel mill in Delta.

Lauren Siburkis, a spokesperson for Toledo Edison shared an overview of the expansion project. “Toledo Edison recently invested nearly \$2.5 million in equipment upgrades to the substation that delivers electricity to North Star BlueScope Steel. The upgrades include installation of two mega voltage capacitor banks that will help ensure a constant, safe flow of high voltage electricity into the facility, especially during periods of high demand.”

(...continued on page 2)



Toledo Edison

...Continued from page 1

“The company (Toledo Edison) also is in the planning stage of a \$67 million proposed project to construct a new transmission substation and high-voltage power line to support the future energy demands of the area’s rapidly expanding manufacturing industry. The proposal includes constructing an 8.5-mile, high voltage power line to connect the new substation to an existing 345 kilovolt (kV) line located nearby. Such ties offer a backup power feed that will help keep the lights on for customers if wires or equipment on their regular line are damaged or need to be taken out of service.

“FirstEnergy and Toledo Edison continue to play a key role in the region’s development by working to ensure the local power grid is ready to support the demands of other energy-intensive customers in the region, like Metal X and Nature Fresh Farms.”

Construction of the new 8.5-mile line that will connect the existing Dowling line to the new substation will be rated at 345kv. It will share tower and other structures with the existing Delta-Wauseon 138kv line and the Delta-Fulton 138kv line.

The full project will be completed by June 1, 2024.

Technology modernization

Toledo Edison is also installing technology to modernize its electric system in northwest Ohio to help prevent power outages and provide more flexibility in restoring power faster. The work is part of a grid modernization plan and includes installation of new, automated equipment and technology in substations and

along power lines serving more than 40,000 customers in parts of Toledo, Maumee, Holland, and nearby areas.

“While we cannot eliminate the possibility of outages occurring due to reasons out of our control, like severe weather, we can take



The project has a special focus on supporting the increased electricity needs of North Star BlueScope Steel for the \$700 million expansion project of its steel mill in Delta

steps to minimize the length and impact of service interruptions when they do occur,” said Rich Sweeney, regional president of Toledo Edison. “The work we’re doing across Toledo will provide new technology and backup power lines for many customers, reducing many power interruptions to just a brief or momentary outage.”

According to the company, utility personnel are upgrading electrical equipment in two Lucas County substations, as well as modernizing

the power lines from those facilities that deliver electric service to customers. Hundreds of homes and businesses in the area are expected to benefit from the installation of more than 60 new automated reclosing devices in the substations and along the power lines that will help limit the frequency, duration, and scope of service interruptions.

These electrical devices work like a circuit breaker in a home that shuts off power when

will isolate the outage to that area and limit the total number of affected customers, noted the company. The device’s smart technology will quickly pinpoint the location of the fault and help utility personnel better understand the cause of the outage to help speed restoration.

Tree trimming

Toledo Edison is also conducting tree trimming and other vegetation management work in communities across its northwest Ohio service area to help enhance service reliability for customers. This year’s \$7.7 million tree-trimming program along 1,550 miles of power lines will help keep power flowing to customers around the clock by preventing tree-related outages, such as those that can occur during the spring and summer storm season.

Since the beginning of the year, tree contractors have trimmed trees along nearly 450 miles of electric lines across the greater Toledo area. The company’s program remains on track to complete an additional 1,100 miles of tree-trimming work by the end of the year.

The tree trimming is done on a four-year cycle. The program includes inspecting vegetation near the lines to ensure the trees are pruned in a manner that helps preserve the health of the tree, while also maintaining safety near electric facilities. Trees that present a danger or are diseased may be removed.

“Trees are a leading cause of power outages, and we complete proactive tree-trimming work each year to prevent tree-related outages during severe weather,” advised Sweeney, “This work undoubtedly helps minimize the impact of weather-related outages to keep the power flowing safely and reliably to customers.”

trouble occurs, with the added benefit of automatically reenergizing a substation or power line within seconds for certain types of outages to keep power safely flowing to customers. This technology is safer and more efficient because it often allows utility personnel to automatically restore service to customers rather than sending a crew to investigate, noted officials.

If the device senses a more serious issue, like a fallen tree on electrical equipment, it

TELEX COMMUNICATIONS INC.

PO Box 1206 • Maumee, Ohio 43537
(419) 865-0972 • www.toledobiz.com

TOLEDO BUSINESS JOURNAL

LAKE ERIE WEST MANUFACTURING & CONSTRUCTION NEWS

DEVELOPMENT NEWS

GREATER TOLEDO BOOK OF LISTS CREDIT WATCH

NEW BUSINESS REGISTER

DEADLINES

Editorial
15th prior to publication

Advertising
17th prior to publication

Please send press releases to:
editor@toledobiz.com

Please send subscription inquiries to:
telexpr@toledobiz.com

Articles may be reprinted by obtaining written permission from Telex Communications, Inc. Errors and omissions contained in editorial or advertising material are not the responsibility of the publisher. Subscriber lists are confidential and protected.

COMING SOON IN

TOLEDO BUSINESS JOURNAL

- Financial Services & Banking
- Healthcare & Insurance
- Meetings, Events & Conferences
- Who’s Who in Toledo Area Law

COMING SOON IN

LAKE ERIE WEST MANUFACTURING & CONSTRUCTION NEWS


- Industrial Suppliers & Equipment
- Commercial Finishing Contractors Directory
- Facility Maintenance & Management: FALL EDITION

S.A. COMUNALE

One Call Solves it All



Fire Extinguisher



Kitchen Hood Suppression



Fire Sprinklers



Backflow



Emergency & Exit Lights



Alarm & Detection

sacomunale.com
419-334-3841
1524 Old Oak Harbor Rd.
Fremont, Ohio 43420

S.A. COMUNALE
An EMCOR Company

Lubrizol

...Continued from page 1

We increased overtime for our existing staff and added 15 new positions to address the changes. These factors combined meant we needed to expand our production capabilities with this expansion.”

According to McIntyre, March 2021 marked its new all-time record for production at the facility and its team beat the previous record by 12%.

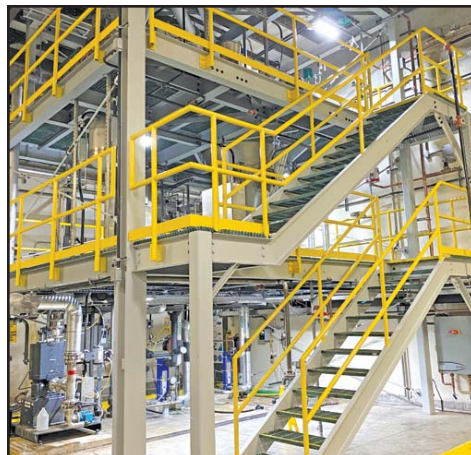
“Those results were enabled by our ‘all-in’ team and the new production unit,” said McIntyre. “Even in a post-COVID world, we expect this trend to continue as consumer habits have evolved, and therefore we expect demand for the products coming out of our Bowling Green site to continue to be strong.”

McIntyre noted that the company has been growing steadily since 2017 and this investment was needed to expand its capacity to support future growth.

Construction began in late August 2020 and was completed in early January 2021. The plant is 14 acres and, according to McIntyre, the new unit was built vertically to save space and has a footprint of around 550 square feet. The design firm was BSI Engineering out of Cincinnati. Dunbar Mechanical was the general contractor and Laibe Electric was the electrical subcontractor, both based out of Toledo.

The Lubrizol Advanced Material plant in Bowling Green is one of two US-based facilities manufacturing Lubrizol’s surfactants, which are used by customers in the beauty and

home businesses. Surfactants made in Bowling Green are used in personal care products such as hand soaps, bath and shower products, and shampoos and conditioners. They are also used in home care products such as liquid dish detergents, household cleaners, and industrial cleaners.



Lubrizol has been growing steadily since 2017 and this investment was needed to expand its capacity to support future growth

“The Bowling Green plant specifically serves primarily the personal and home care markets. We make surfactants, which are ingredients in many hand soaps, liquid dish soaps, laundry detergents, shower gels, shampoos, etc,” said McIntyre.

Lubrizol is a global company with 58 manufacturing sites around the world. According to McIntyre, utilizing its formulations expertise, testing capabilities, market insights, and global scale, the company helps its customers

deliver products that enable billions of people to live better every day. This includes chemistry for pharmaceuticals and medical equipment, nutraceutical ingredients, polymers for skin care products, recyclable TPUs used in a wide range of medical and wellness products, and more.

According to McIntyre, half the vehicles in the world rely on Lubrizol technology to extend vehicle life, prevent equipment failure, reduce downtime, improve fuel economy, and reduce emissions.

“Our expertise in fluid technology, material science, and a full suite of end-to-end solutions becomes indispensable to the performance and environmental impact of vehicles, from internal combustion engine vehicles to electric solutions,” he said.

The company has 70 employees at the Bowling Green plant and 9,000 globally. The company is actively hiring for material handlers and maintenance technicians. Over the past nine months, the company has added 11 positions and is still actively trying to fill four more.

“Lubrizol leverages its unmatched science to unlock immense possibilities at the molecular level, driving sustainable and measurable results to help the world move cleaner, create smarter, and live better. Lubrizol enhances every facet of our lives from the way we move, to how we take care of ourselves and our families, and how we work and play. Our technologies, quality products, unmatched testing, customer service, and market expertise have made us successful and able to overcome everyday challenges and improve product performance regardless of market or customer need,” concluded McIntyre.

OVH

...Continued from page 1

In addition, the physical setup of the current center requires ergonomic improvements,” said Jeff Rapp, chief communications officer, Ohio Department of Veterans Services. “Also, at the completion of this project, our on-site police department will move into an area that is roughly 800 square feet instead of its current 600 square feet.”

According to Rapp, the project will move the communications center to the old pharmacy room in Building B and provide the nucleus for life safety components for the Sandusky Home. It also will serve as a safety support center for the Georgetown Home in Brown County, Ohio.

“The communication center is responsible for receiving and dispersing critical information related to the safety of residents, staff, and visitors of the homes, as well as serving as a support center for day-to-day activities related to customer service. The facility will include oversight of the closed-circuit TV system (security cameras) and access control of the treasury, cooler, and pharmacy alarms linked to the center. The current alarm systems are all on individual panels and should be consolidated for a more efficient system,” said Rapp.

Rapp noted that the communications center is currently and shall remain manned 24 hours a day, seven days a week (...continued on page 16)

NEED HELP SNIFFING OUT INFO?

CREDITWATCH

A business monitoring service for the Toledo area called *Credit Watch* is being offered by Telex Communications, Inc. — publishers of *Toledo Business Journal*. The service provides a report twice a month of Law Suits and Liens filed against area companies. Also, companies filing bankruptcy are included in the report. A sample report can be viewed on our website. Each issue will enable you to monitor customers, suppliers, associates and others showing up in *Credit Watch*.

NEW BUSINESS REGISTER

New companies are target purchasers of a large range of products and services and represent key growth prospects for area firms. SUBSCRIBE to *New Business Register* — A monthly listing service of 1) new firms opening for business and 2) existing businesses changing address in the Toledo area (includes new business name, principal, address and phone number).

A monthly business publication providing comprehensive local news coverage in northwest Ohio and southeast Michigan. *Toledo Business Journal* features important business and marketing information, and valuable leads only available to subscribers.

For more information, visit toledobiz.com/publications.html

Introducing the Kuhlman Direct Online Store!

www.shop.kuhlman-corp.com

- Over 2,600 products in six categories
- In-depth product information
- Personalized lists of favorites and projects, plus saved shopping carts
- Pickup at Kuhlman stores in Toledo and Akron, or delivery by UPS, Kuhlman Truck or LTL Freight
- Payment by credit card or on Kuhlman Account

The screenshot shows the website interface with a navigation bar containing 'MY ACCOUNT', 'MY LIST', 'MY SAVED CARTS', 'CUSTOMER SUPPORT', and 'CHECKOUT'. A search bar is present with the text 'Search by Keyword, Kuhlman Item # or Product Name'. Below the navigation, there are six main product categories: BRICK, STONE & HARDSCAPES; CONSTRUCTION SUPPLIES; DECORATIVE CONCRETE; SURFACE PREP EQUIPMENT; CONCRETE FORMING; and TOOLS & ACCESSORIES. Two featured product images are shown: one for 'Brick, Stone & Hardscapes' and another for 'Construction Supplies'.

JOB SHOP DIRECTORY

FABRICATION

APT Manufacturing Solutions

Arnold Machine, Inc.

Bohl Machine

Buckeye Machine Fabricators, Inc.

Butz Welding & Fabricating, Ltd

Crum Manufacturing, Inc.

Custom Machine, Inc.

Fab Steel Co., Inc.

Innovative Machine and Manufacturing

Latanick Equipment, Inc.

Lomar Machine & Tool Company

Machine Tool Design & Fab LLC

Maumee Valley Fabricators

Miller Precision Mfg Industries, Inc.

Odyssey Machine Company, Ltd.

Quality Tool & Metal Stamping Company

Progress TAC

Rapid Machine Inc.

RLM Fabricating, Inc.

RTD Manufacturing

Salenbien Welding Services, Inc.

Swanton Welding & Machining Co., Inc.

The Andersons Fabrication Shop



The Andersons Fabrication Shop
andersonsrail.com/fabrication
419-891-2930
 415 Illinois Ave, Maumee OH 43537

JOB SHOP SERVICES:
 Fabrication, Welding, Assembly, Cutting,
 Steel Suppliers, Painting / Powder Coating,
 Parts & Services, Metal Finishing, Laser Cutting

The Fabrication Shop

Walker Tool & Machine Co.

The Yarder Manufacturing Company

WELDING

APT Manufacturing Solutions

Bohl Machine

Butz Welding & Fabricating, Ltd



Butz Welding & Fabricating Ltd
www.butzwelding.com
419-243-3100
 1542 Champlain St. Toledo, Ohio 43604

JOB SHOP SERVICES:
 Custom Fabricating, Welding, Assembly,
 Steel Supplier, Plasma Cutting, Repair Services,
 Turning, Milling, Forming, Rolling, Drilling,
 Sawing, Shearing, Punching, Bending

Century Die Company, LLC

Douglander Machine & Tool, LLC

Innovative Machine and Manufacturing

Latanick Equipment, Inc.

Lomar Machine & Tool Company

Machine Tool Design & Fab LLC

Odyssey Machine Company, Ltd.

Progress TAC

Rapid Machine Inc.

Salenbien Welding Services, Inc.

Swanton Welding & Machining Co., Inc.

The Andersons Fabrication Shop

The Yarder Manufacturing Company

Unique Tool & Manufacturing

ASSEMBLY

Arnold Machine, Inc.

API Alliance, Inc.

Bohl Machine

Butz Welding & Fabricating, Ltd

Miller Precision Mfg Industries, Inc.

Odyssey Machine Company, Ltd.

The Fabrication Shop

Unlimited Machine and Tool L.L.C.

CUTTING

Architectural & Industrial Metal Finishing Company, LLC

Arnold Machine, Inc.

Butz Welding & Fabricating, Ltd

Innovative Machine & Manufacturing

Machine Tool Design & Fab LLC

Miller Precision Mfg Industries, Inc.

Salenbien Welding Services, Inc.

Swanton Welding & Machining Co., Inc.

Walker Tool & Machine Co.

The Yarder Manufacturing Company

MACHINING AND TOOLING

Abbott Tool Inc

APT Manufacturing Solutions

API Alliance, Inc.

Architectural & Industrial Metal Finishing Company, LLC

Arnold Machine, Inc

Basilus Inc

Bohl Machine

Buckeye Machine Fabricators, Inc.

Custom Machine, Inc.

Douglander Machine & Tool, LLC

Figley Stamping Company

Findlay Machine & Tool, Inc.

Fischer Tool & Die Corp

Innovative Machine and Manufacturing

Latanick Equipment, Inc.

Lefere Forge

Lomar Machine & Tool Company



Lomar Machine & Tool Company
www.lomar.com
517-563-8136
 135 Main St. • Horton, MI 49246

JOB SHOP SERVICES:
 5th Axis Machining, CNC Vertical & Horizontal Milling, CNC Turning, Wire & Plunge EDM, and I.D./O.D Grinding & Surface Grinding. Additional Services Include: Metal Fabrication, which includes CNC Laser Cutting & Metal Forming, Mig & Tig Welding, and Metal Finishing [Powder & Liquid Coating].

Machine Tool Design & Fab, LLC.

Miller Precision Mfg. Ind. Inc.

N M Hansen Machine & Tool Co.

Odyssey Machine Company, Ltd.



CUSTOM JOB SHOP • Est. 1947
BUTZ WELDING & FABRICATING LTD
 STEEL • ALUMINUM • STAINLESS

Butz Welding & Fabricating is a 3rd generation Custom Job Shop, established in 1947.

We specialize in Welding, Machining and Repair Steel, Aluminum and Stainless Steel

We custom build from print or drawing, Carts, Catwalks, Mezzanines, Platforms, Racks, Stairs, Stands, Fixtures, Tooling, Jigs, Conveyors, Handrails, and anything else you can dream up!

Please contact us for a quote on your next project!

Mr. Reggie Butz
 1542 Champlain St.
 Toledo, Ohio 43604
 (419) 243-3100

www.butzwelding.com

JOB SHOP DIRECTORY

- Parker Steel Company
- Pioneer Industrial Systems, LLC
- Projects Designed & Built, Inc.
- Rapid Machine Inc.
- Rimer Enterprises, Inc
- RLM Fabricating, Inc.
- RTD Manufacturing
- Superior Bar Products, Inc.
- Swanton Welding & Machining Co., Inc.
- T & S Tool and Supply Company
- The Andersons Fabrication Shop
- The Yarder Manufacturing Company
- Toth Industries Inc
- Unique Tool & Manufacturing
- Unlimited Machine & Tool L.L.C.
- Walker Tool & Machine Co.
- Wauseon Machine and Manufacturing, Inc.
- Willis Machinery & Tools Co., Inc.
- PAINTING / POWDER COATING**
- Architectural & Industrial Metal Finishing Company, LLC
- Arnold Machine, Inc
- Butz Welding & Fabricating, Ltd
- Lomar Machine & Tool Company
- Odyssey Machine Company, Ltd.
- Salenbien Welding Services,, Inc.
- Swanton Welding & Machining Co., Inc.
- The Yarder Manufacturing Company
- REPAIR SERVICES**
- American Broach & Machine Co.
- APT Manufacturing Solutions
- Arnold Machine, Inc.
- Buckeye Machine Fabricators, Inc.
- Butz Welding & Fabricating, Ltd
- Crum Manufacturing, Inc.
- Custom Machine Inc.
- Douglander Machine & Tool, LLC
- Fischer Tool & Die Corp

- Frazier Machine & Production, Inc
- Innovative Machine & Manufacturing
- Latanick Equipment Inc.
- Machine Tool Design & Fab LLC
- N M Hansen Machine & Tool Co.
- Odyssey Machine Company, Ltd.
- Pioneer Industrial Systems LLC
- RTD Manufacturing
- Salenbien Welding Services, Inc.
- Superior Bar Products, Inc.
- T & S Tool and Supply Company



T&S
Tool & Supply Co., Inc.

www.tstool.com
419-866-5507
7341 Airport Hwy, Holland OH 43528

JOB SHOP SERVICES:
Complete Inventory of Industrial Supplies,
In-House Inventory Systems
Including Vending Machines

- The Andersons Fabrication Shop
- The Fabrication Shop
- The Yarder Manufacturing Company
- Unique Tool & Manufacturing
- Walker Tool & Machine Company
- Willis Machinery & Tools Co., Inc.

METAL FINISHING

- Architectural & Industrial Metal Finishing Company, LLC



Architectural & Industrial Metal Finishing Company, LLC

www.aimetalfinishing.com
440-963-0410
1091 Sunnyside Road Vermilion, OH 44089

JOB SHOP SERVICES
Powder Coating, Laser Cutting, Bending,
Machining & Tooling, Metal Finishing

- Classic Metal Finishing
- Hale Performance Coatings




AWS D1.1
Certified Welders
Mild Steel
Stainless Steel
Aluminum


- ◆ Welding
- ◆ CNC Plasma
- ◆ Cutting & Punching
- ◆ Bending
- ◆ Shearing
- ◆ On-site mobile welding and media blasting
- ◆ Machining
- ◆ Punching & Forming
- ◆ Rolling
- ◆ Sandblasting
- ◆ Painting

FREE ESTIMATES
Walk-Ins Welcome
415 Illinois Avenue,
Gate 2
CALL
419-891-2930

**NOW OFFERING
HIGH SPEED
LASER CUTTING
OF METAL SHEETS**

RESTORE ◆ BUILD ◆ REPAIR ◆ REVISE


Fabrication



CNC Laser Cutting, Metal Forming,
Welding & Finishing

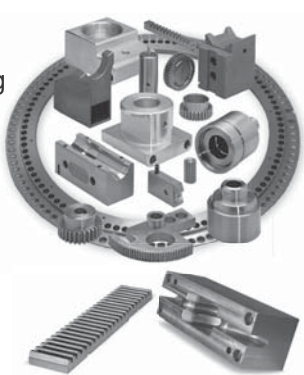
Job Shop

- Build to Print
- Prototyping
- Contract Manufacturing
- Managed Inventory
- Short & Medium Production Runs



Designers | Manufacturers
Machines • Tools • Fixtures • Gages • Test Equipment
(517) 563-8136 • www.lomar.com

Machining



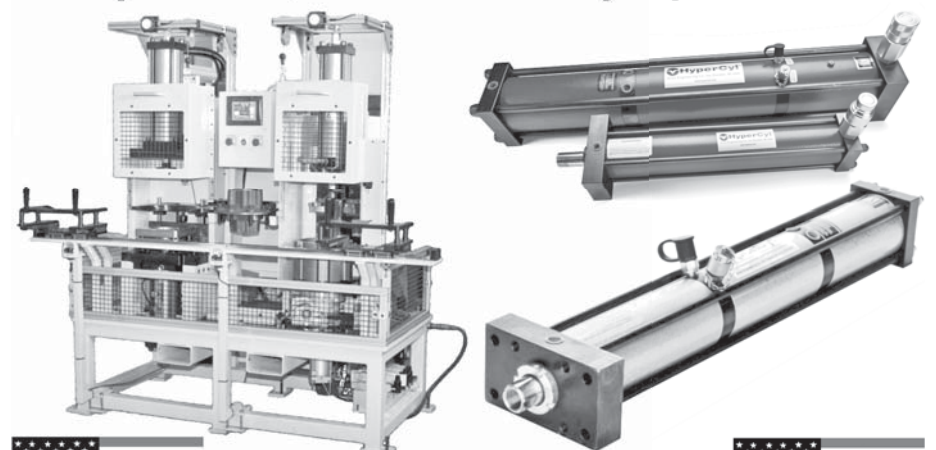
CNC Milling, Turning, EDM & Grind

HyperCyl®

By Aries Engineering Company, Inc.

**From 1/2 ton to 200 tons, with
no hydraulic power unit.**

**Hydra-pneumatic and servo actuators,
presses, and assembly systems**



734-529-8855

www.hypercyl.com

Email: Sales@Hypercyl.com
Aries Engineering Company
130 Aries Dr. Dundee, MI



WILSON BARRETT
BATTERY POWER SYSTEMS
Your source for industrial batteries & chargers.

- New & reconditioned forklift batteries
- Industrial chargers
- Parts & service

419-662-9523
wilsonbarrett.com

Mitutoyo BALDOR HARVEY TOOL JET. *INSIZE* brown & sharpe.

J E T. GH-1880ZX Gap Bed Lathe

Specifications

- 27-1/2" Swing in Gap
- 18" Swing, 80° Centers
- 3-1/8" Spindle Bore
- 61 Inch Threads
- 24 Metric Threads
- 9" Cross Slide
- 7-1/2 HP, 220/460V

Standard Equipment

- 10" 3-Jaw Chuck
- 12" Face Plate
- 5-Pc. Quick Change Tool Post Set
- Steady Rest
- Coolant System
- LED Worklight

Options Included

- Accu-Rite 200S 2-Axis DRO
- Taper Attachment
- 5-C Collet Closer

#321493
List Price: \$38,652.86
SALE PRICE: \$27,500.00

7341 Airport Highway • Holland, OH 43528
P. 419-866-5507 or 1-800-525-8665 • F. 419-866-4263 or 1-800-525-8666
www.tstool.com • sales@tstool.com

Save on Freight!
FOB, Holland, OH

NEW 40' x 10' x 10' BATCH POWDER COATING LINE. NOW OPEN!

ISO CERTIFIED

A&I ARCHITECTURAL & INDUSTRIAL METAL FINISHING COMPANY, LLC

- POWDER COATING
- LASER CUTTING
- BENDING



LARGEST JOB SHOP IN REGION:

- Multiple Automatic Lines
- 26' Long Part Capacity
- AAMA 2605-98 Certified
- Flatbed and Box Trucks

IN BUSINESS SINCE 2004!
FOR RFQ, EMAIL
SALES@AIMETALFINISHING.COM



- Sheet Capacity is 5' x 10' up to 3/4" Thick
- Can Cut Stainless Steel, Aluminum, Mild Steel, Hardened Steel and Titanium

NEW LASER AND PRESSES

FABRICATION:

- Trumpt Laser
- Trumpt Break
- Vertical CNC Mill
- Welding Services

www.aimetalfinishing.com • 440.963.0410
1091 Sunnyside Road • Vermilion, Ohio 44089

JOB SHOP DIRECTORY

Lomar Machine & Tool Company
The Yarder Manufacturing Company

TURNING

Bohl Machine
Century Die Company, LLC
Custom Machine, Inc.
Douglander Machine & Tool, LLC
Lomar Machine & Tool Company
N M Hansen Machine & Tool Co.
Odyssey Machine Company, Ltd.
Unlimited Machine & Tool L.L.C.
Wauseon Machine and Manufacturing, Inc.

MILLING

Bochi North America
Century Die Company, LLC
Butz Welding & Fabricating, Ltd
Custom Machine, Inc.
Douglander Machine & Tool, LLC
Lomar Machine & Tool Company
Machine Tool Design & Fab LLC
Miller Precision Mfg Industries, Inc.
N M Hansen Machine & Tool Co.
Odyssey Machine Company, Ltd.
Rapid Machine Inc.
Unlimited Machine & Tool L.L.C.
Walker Tool & Machine Co.
Wauseon Machine and Manufacturing, Inc.

GRINDING

Century Die Company, LLC
Custom Machine, Inc.
Hale Performance Coatings
Lomar Machine and Tool
Miller Precision Mfg Industries, Inc.
Rapid Machine Inc.
RTD Manufacturing
Walker Tool & Machine Co.

CASTINGS

Rimer Enterprises Inc
Toth Industries, Inc.

MOLDING

Innovative Machine and Manufacturing
RJ Plastics, LLC
Century Die Company, LLC
Basilius Inc
National Molded Products Inc

CNC

American Broach & Machine Co.
APT Manufacturing Solutions
Arnold Machine, Inc.
Bochi North America
Bohl Machine
Buckeye Machine Fabricators, Inc.
Century Die Company, LLC
Custom Machine, Inc.
Fischer Tool & Die Corp
Frazier Machine & Production, Inc.
Innovative Machine and Manufacturing
Latanick Equipment, Inc.
Lomar Machine & Tool Company
Machine Tool Design & Fab LLC
Maumee Valley Fabricators Inc
Miller Precision Mfg Ind, Inc.
N M Hansen Machine & Tool Co.
Odyssey Machine Company, Ltd.
Pioneer Industrial Systems, LLC
Progress TAC
Rapid Machine Inc.
RTD Manufacturing
Salenbien Welding Services, Inc.
Superior Bar Products, Inc.
Swanton Welding & Machining Co., Inc.
The Fabrication Shop
The Yarder Manufacturing Company
Toth Industries, Inc.
Unlimited Machine & Tool L.L.C.
Walker Tool & Machine Co.
Wauseon Machine and Manufacturing, Inc.

Area Industrial Supply Firms

Listed by Number of Local Employees

	# Local Employees	Founded Locally	Top Local Officer	Major Product Lines Represented	Services Available
Bostwick Braun Industrial Supply 7349 Crossleigh Ct - Toledo	50±	1855	Mark Christie	MRO; Cutting Tools; Fasteners; Safety / Protection; Janitorial / Sanitation; Power Tools / Hand Tools; Abrasives; Paint & Supplies	Vendor-Managed Inventory; Custom Signage; Dispensing Solutions; Kitting; On-Site Training; EZ-Catalog Reselling
Binkelman 2601 Hill Ave - Toledo	35	1946	Dan Kazmierczak	Bearings; Electrical Power Transmission; Hydraulics; Industrial Hose; Mechanical Power Transmission; Conveyor Belt & Components	Mobile Hydraulic Plumbing; Motor & Gearbox Repair; Conveyor Surveys; Product & Safety Training
Pinnacle Tool & Supply Toledo & Cleveland	20	2000	Tim McNeeley; Mike Sauppe	CUTTING TOOLS: Allied Machine; Ceratizit; Ingersoll; Iscar; Widia; FLUIDS: Chemtool, Hangsterfers; Master Chemical; ABRASIVES: 3M; Radiac, Hermes; PPE: Alcohol Wipes; Gel Hand Sanitizer; Face Masks	Customized Vendor-Managed Inventory Solutions, Including Vending & Consignment; Solutions-Based Cost Reductions; Technical Product Training & Facility Safety Analysis
Wilson Barrett Battery Power Systems 2840 Innovative Dr - Northwood	20	1983	Craig Gaudreau	Industrial Batteries & Chargers: Sales & Service	New Industrial Batteries; Reconditioned Industrial Batteries; Industrial Chargers; Battery Watering Accessories
QC American / High Gear Tools 575 S Mansfield - Ypsilanti, MI	18	2007	Fran Mao	Metal Cutting Tools, Broaches, Hob, Sharper & Shaver Cutters	Cutting Tools
TA Industrial Solutions, Inc. 7749 Ponderosa Rd - Perrysburg	18	1951	Peter Koury	Abrasives & Related Systems for Cutting, Grinding, Pre-Paint & Finesse / Finishing in Metal Fabrication, Plastics & Wood	FTY (First Time Yield) Optimization Roadmap™; Cost Reduction Roadmap™; Lean Material Supply: 3 Services Focused on Maximizing Productivity at the Lowest Operational Cost
T&S Tool & Supply Co., Inc. 7341 Airport Hwy - Holland	14	1978	Roger Thomas	OSG Tap & Die, Starrett, Gurhring, Mitutoyo, Jet, Clausing-Kalamazoo, YG-1	Vending Services; In-House Inventory; Delivery to Portions of NW Ohio; One of the Largest Industrial Inventories in the State; Fully Interactive Website; eBay Store for Surplus & Sale Items
Gogel Fastener & Industrial Supply Co. 1819 N 13th St - Toledo	11	1937	Heather Terrell Berry	Fasteners; Cutting Tools; Hand Tools; Electrical; Abrasives; Power Tools	Bin Management; Blade Sharpening; Stud Cutting
General International Power Products LLC 6243 Industrial Pkwy - Whitehouse	10	2014	John Brown	DIY & Industrial Woodworking & Metalworking Benchtop and Stationary Tools & Machinery	Factory Direct Wholesale Sales, Service & Distribution
JML Services 3401 Crissey Rd - Mondova	7	1986	Tim Geis	Ashland Conveyor; Cogan Mezzanines; Panel-Built Modular Buildings; Vestil Loading Docks; Bulldog Rack; PTR Balers & Compactors	Rack & Shelving Systems; Installation of Material Handling Equip; Repair System Design & Layout; Ergonomic Workstations; Custom Fabrications; Balers & Compactors
G & G Safety Supply 1855 S Reynolds Rd - Toledo	5	2017	Jodie Stearns, Manager	Fall Protection; First Aid; Work Boots; Personal Protection Equipment (PPE); Cones	i.n.a.
Cornell Supply Company 5625 Enterprise Blvd - Toledo	i.n.a.	1926	Jason Eggerstorfer	Carbide Inserts; Indexable Tooling; Cutting Tools; Abrasives; Coolants; Industrial Tools	Vending Machine / Tool Crib; Coolant Lab Testing; Tooling Repairs; Inventory Control; On-Site Tool Testing
O.E. Meyer Co. 30595 Tracy Rd - Walbridge	i.n.a.	1996 Toledo Branch	Eric Wood	Industrial Compressed & Bulk Gases; Specialty Gases; Propane; Beverage CO2; Welding Supplies; Welding Automation	Automated Cutting & Welding Solutions; Service & Repair Of Welding & Cutting Equip; Equip Calibration; Technical Welding Support; High Purity Industrial, Specialty & Medical Gases

Published 07-21 List includes only those Industrial Supply and Tool Firms that responded by deadline; i.n.a. = information not available



Let MIT extend the life + reduce what you spend on your Dock + Door Systems.
Our Technicians work on all brands of levelers, locks + doors.

THE POWER OF A PM

Benefits Include:

- Priority Scheduling For Service Calls
- Protection From Downtime
- Extended Useful Life Of Your Dock + Door Equipment
- Decrease In Long Term Repair Expenses

Area Industrial Equipment Firms

Listed by Number of Local Employees

	# Local Employees	Founded Locally	Top Local Officer	Major Product Lines Represented	Services Available
Bohl Equipment Co. 534 W Laskey Rd - Toledo	80+	1950	Bob Bohl	Forklifts; Industrial & Street Legal Vehicles; Warehouse Equipment	Sales; Service; Rentals; Parts & Fleet Services
Miami Industrial Trucks, Inc. 10406 Geiser Rd - Holland	69	1992	Michael Wechta, VP / General Mgr	Caterpillar, Mitsubishi & Jungheinrich Forklifts; Hawker Industrial Batteries & Chargers; Nilfisk Advance Ind Cleaning Equip; Dock & Door Equip: Serco, McGuire, Dynaco High Speed, TKO, Clopay and Albany	Road & Shop Service for All products Sold & Competitive Products; Full Service Leasing Programs / Long Term Rental for All Products Sold; Short Term Rental; Fleet Management Services
Bohl Crane Inc. — Bohl Machine 534 W Laskey Rd - Toledo	60+	1924	Doug Bohl	Cranes; Monorails; Ergonomic Lift Assists; Conveyors; Automated Handling; Machining	Manufacturing; Sales; Service; Parts; Installations; Inspections
Towlift Inc. 2860 Crane Way - Northwood	45	1965	Bill St. John	Forklift Sales, Parts; Service; Rentals; Training; Fleet Management	New & Used Forklift Sales; Authorized Dealer for CAT Lift Trucks; Hoist; Kalmar & Trackmobile Rail Car Movers; Warehouse Racking
Forklifts of Toledo 140 N Byrne Rd - Toledo	30	1968	Joe Pavlovic	Forklift Sales, Parts; Service; Rentals; Training; Fleet Management	New & Used Forklifts; Authorized Distributor for Linde, Clark & Sellick
Tiger Material Handling, Inc. 465 Main St - Clay Center	30	1973	Mike Pietrowski	Manufacturer of Structural Steel Mezzanines Stairs, Ladders & Handrail Systems; SteelKing Stocking Pallet Rack Dealer; Material Handling Conveyors & Systems	Conveyors; Loading Dock; Work Station Crane; Racking Sales Installation & Maintenance; Mezzanine Manufacturer; Shelving Sales / Installation / Service
Triad Technologies, LLC 426 W Dussel Dr - Maumee	30	2002	Doug Wissman	Parker Hannifin; Enerpac	Industrial Distribution; Engineered Systems; Service & Repair
Taylor Material Handling & Conveyor 2910 Glanzman Rd - Toledo	10	1979	Robert Knapik	Conveyor Systems; Packaging Equip; Gorbelt Ergonomic Work Cells; Southworth Lift / Positioning Equip; Dorner Automation Systems & Industrial Safety Products	Engineering; Standard / Custom Material Handling Equipment; Conveying Equipment; System Integration; Steel Fabrication & Installation
JML Services 3401 Crissey Rd - Monclova	7	1986	Tim Geis	Ashland Conveyor; Cogan Mezzanines; Panel-Built Modular Buildings; Vestil Loading Docks; Bulldog Rack; PTR Balers & Compactors	Rack & Shelving Systems; Installation of Material Handling Equip; Repair System Design & Layout; Ergonomic Workstations; Custom Fabrications; Balers & Compactors
Andersen Material Handling 5265 Tractor Rd Toledo	i.n.a.	1960	Joe Stein	Raymond & Komatsu Forklifts; Remstar Vertical Storage Units; Warehouse & Material Handling Products	Forklift Operator & Safety Training; Equipment Service; Fleet Management; Parts; Shop; Sales & Service; Material Handling Systems
Interlink Technologies PO Box 970 - Perrysburg	i.n.a.	1986	Tim Granatir	Warehouse-LINK® Warehouse Management Solutions (WMS)	Multiple Platform WMS software (SQL Server or iSeries); WMS Development Incorporating Warehousing Best Practices; Mobile Computing Leveraging Barcode Technology

Published 07-21 List includes only those Industrial Equipment Firms that responded by deadline; i.n.a. = information not available

LAKE ERIE WEST
MANUFACTURING
& CONSTRUCTION
NEWS

If Your Company is Missing, email AHINTZ@TOLEDOBIZ.COM for Info on Being Added
Next Month: ROOFING CONTRACTORS

THINK INTERLINK!

Warehouse Management Solutions

Manage

- Dates
- Environments
- FIFO/LIFO
- JIT
- Recalls
- Warehouse Space
- Cycle Counts
- Workflow
- Audit Trails/History
- Compliance
- Product Demand



Technology

- Web-Enabled
- Client Server
- Platform Neutral
- Mobile Computing
- Device Neutral
- ERP Integration
- Integration with Material Handling Systems


INTERLINK
TECHNOLOGIES
Warehouse Management Systems

ThinkInterlink.com

800.655.5465

DESIGN/BUILD CONSTRUCTION

First Solar to invest \$680M in expansion project

Rudolph Libbe Group to lead construction on First Solar's new US manufacturing plant



First Solar's second Ohio manufacturing facility located in Lake Township

First Solar, Inc. will invest \$680 million to expand America's domestic photovoltaic (PV) solar manufacturing capacity by 3.3 gigawatts (GWDC) annually, representing

an implied capital expenditure of approximately \$0.20 per watt. The company intends to fund construction of its third US manufacturing facility, in Lake Township,

with existing cash resources. The new facility will be one of the most advanced of its kind in the solar industry and will create 500 new jobs, noted officials.

The Rudolph Libbe Group (RLG) will serve as design/build contractor for the new manufacturing facility.

Construction is expected to begin this summer on the 1.8 million square foot facility. Rudolph Libbe Inc. and GEM Inc. craftspeople will self-perform all major trades work. More than 500 construction jobs will be created by the project.

The facility will be located adjacent to First Solar's second Ohio manufacturing facility, completed in 2019, and within a mile of First Solar's flagship manufacturing center in Perrysburg Township. Once the new facility is fully operational, the three-factory footprint will be the largest fully vertically integrated solar manufacturing complex outside of China, according to the company.

"For nearly 20 years, First Solar has been a key member of our local business community," said Tim Alter, chief executive officer

of Rudolph Libbe Inc. "The Rudolph Libbe Group is honored to have a long relationship with them, starting with the construction of (...continued on page 10)

Surveying & Construction
Positioning Solutions

Regional Office

3637 Briarfield Blvd. | Maumee, OH 43537
419-243-7271 | PLI@laserinst.com



**Precision Laser
& Instrument, Inc.**
www.laserinst.com

ALVADA
ACI CONST. CO., INC.

General Construction, Construction Management,
Design Build



50 North - Findlay

**PROUD TRADITION OF
QUALITY CRAFTSMANSHIP
AND
CUSTOMER SATISFACTION**

- Family-owned and a trusted leader in Northwest Ohio for more than 30 years
- A reputation of quality workmanship, outstanding customer service and dedicated employees who make client satisfaction their top priority



North Baltimore ODOT Facility

Your Success is Our Success

With our clients' unique needs in mind, we offer a wide range of services that get the job done on time and within budget

I AM CEC.

Fernando Camargo, P.E.
Project Manager, Employee-Owner

"Any challenge a property might present—civil or environmental—we have the people to solve it. I joined CEC Toledo because the organization is filled with people who care about the work we do. It's never about doing the task and going home. To me, that's what 'owning it' is all about."

We Own It.™ Find out how at cecinc.com/Toledo.

WWW.ALVADACONSTRUCTION.COM
419-595-4224

AUTHORIZED BUILDER
NUCOR
BUILDING SYSTEMS
NUCOR company

CEC
Civil & Environmental Consultants, Inc.

CEC | Toledo | Celebrating 10 years of client-first service.
4841 Monroe Street | Toledo, OH | 419.724.5281

First Solar

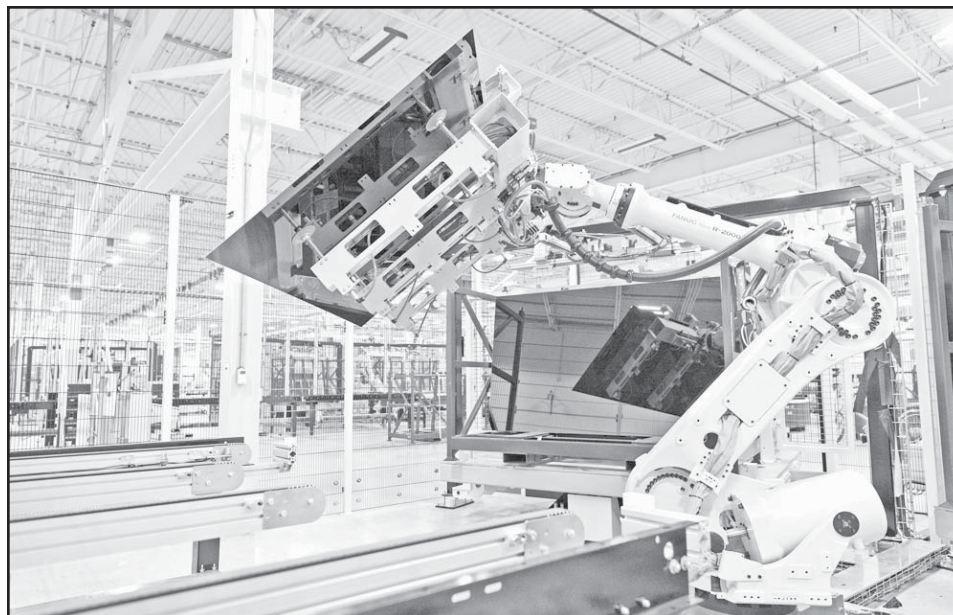
...Continued from page 9

their first manufacturing facility and their first Lake Township manufacturing plant two years ago. We're very pleased and proud to build for First Solar again as they continue to grow and bring jobs to our community."

According to Tom Schneider, senior pre-construction leader, Rudolph Libbe Group, the design/build delivery method was used on the first Lake Township manufacturing facility and First Solar felt that was a successful project delivery method, so they decided to use the same method to construct this new facility. These are the first two First Solar facilities in the US to be constructed using the design/build project delivery method.

"The design/build contractor has single-source responsibility for design and construction, which frees the owner from needing to manage every aspect of their project. We manage all design partners, which can shorten the schedule and result in cost savings. We act as an extension of the customer to manage the entire project, long before construction and even design begin," said Schneider. "We can be extremely proactive in ensuring that the project moves forward smoothly. We can provide a guaranteed total project cost and ensure that we can meet a fast-track schedule. The project benefits from a collaborative teaming approach and a design/build team that is selected based on qualifications, experience, and individual team members. The owner can provide early construction input during the design,

budgeting, and planning phases. We use value-engineering to give the owner the most value for their money, and a constructability review during the design phase ensures



First Solar is expected to expand America's domestic photovoltaic solar manufacturing capacity by 3.3 gigawatts annually

fewer change orders."

Schneider noted that the design/build project delivery method allows for phased design, which means RLG doesn't need to wait for a complete set of documents before starting construction – it can provide the fastest project completion, because design

and construction can overlap.

Phase 1 of the project is civil work; phase 2 is building enclosure – structural steel, walls and roofing; phase 3 involves interior MEP finishes; and phase 4 is owner equipment setting.

"The design/build delivery method makes up approximately 40% of the Rudolph Lib-

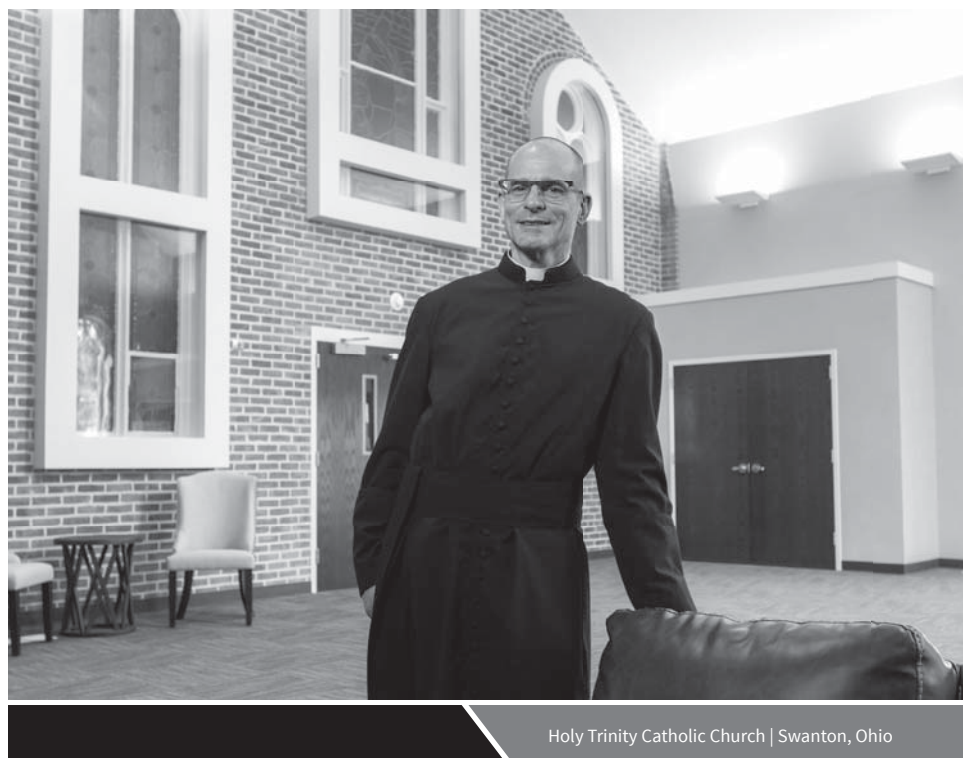
to commence operations in the first half of 2023. It is projected to achieve its throughput entitlement (modules produced per day) by the end of the same year with over 3 GWDC of nameplate capacity, and is expected to attain full nameplate capacity, based on the company's module efficiency roadmap, in 2025. When fully operational, the facility will scale the company's north-west Ohio footprint to a total annual capacity of 6 GWDC.

"These investments in American-made solar technologies are the perfect embodiment of [the government's] strategy to build out domestic manufacturing and supply chains for critical industries," said US Department of Energy (DOE) Secretary Jennifer M. Granholm. "As a partner to our solar program since 2003 and a DOE loan guarantee recipient in 2012, this company is a great example of how investment and innovation can build the clean energy future right here at home – shoring up American competitiveness and bringing good-paying jobs to all pockets of the country."

Unique among the world's 10 largest solar manufacturers for being the only US-headquartered company and for not using a crystalline silicon (c-Si) semiconductor, First Solar produces its ultra-low carbon thin film PV modules using a fully integrated, continuous process under one roof.

The new plant is expected to produce an enhanced thin film PV module for the utility-scale solar market in the US, which is anticipated to have a higher efficiency and wattage in a larger form factor. The additional production capacity from this new facility,

(...continued on page 13)



Holy Trinity Catholic Church | Swanton, Ohio

You've Built Something Truly Special

The Rudolph Libbe Group served as design/build contractor for a 3,300-square-foot renovation/addition to this 133-year-old church.



"This was my first major construction project, and it was a good experience as design/build. There are so many details that need to be worked out and negotiated, things that can't be overlooked.

The contractor and architect are right there from the beginning, on the same page, and they're with you at the very end as well. What I learned... choose an architect and a construction firm you trust implicitly."

—Fr. Michael Dandurand

Learn more at RLGbuilds.com



Program Solutions
Group, LLC

Construction Management
Owner/Tenant Representation
Design-Build





Providing custom-tailored solutions for our clients, from concept to completion.

1718 Indian Wood Circle #D Maumee, Ohio 43537 (419) 873-6230
www.programsolutionsgroup.com



Asphalt Paving & Concrete

INSTALL, REPAIR, REPLACE

WE DO IT ALL

Driveways & Parking Lots

- Excavating
- Floors
- Paving
- Loading Docks
- Repairs
- Dumpster Pads
- Sealing
- Parking Lots



Buck Brothers

Asphalt Paving & Maintenance LLC

419-536-SEAL







American Excelsior investing \$4M in Norwalk

Company to expand with 60,000 square foot building, create 10-15 jobs as part of project

American Excelsior Company has finalized plans and broken ground on a new \$4 million, 60,000 square foot manufacturing facility adjacent to its current manufacturing facility located at 180 Cleveland Road in Norwalk. The building expansion will create 10-15 new jobs for the company as well.

“Our decision to expand our operations is part of our strategic plan to continue our targeted growth strategy and to continually improve our work environment for our associates within our local community we already operate in,” said Casey Poignon, American Excelsior general manager.

Construction of the new facility is underway and to be completed in early fall. Janotta & Herner is the general design/build contractor on this project.

According to Derek Guerra, project manager, Janotta & Herner, the main benefit of using the design/build method for this project – and in general – is efficiency.

“The design/build method allows for a smooth line of communication between the client and contractor. American Excelsior has worked with Janotta & Herner in the past and knows how important this is for the quality and timeline of a project,” said Guerra. “Design and construction are handled by one point of contact, which streamlines decision making – saving time and money.”

Throughout the entirety of the project, there will be 30-40 construction professionals

providing services, including office personnel and field operations for Janotta & Herner.

According to Guerra, before any construction could happen, the land needed to be prepared for the foundation. This included clearing, correcting various soil conditions, and



In-progress construction of American Excelsior's new facility in Norwalk

removal of buried debris. The last parts to be designed are the interior details such as flooring, partition walls, fixtures, and more which can be accomplished as construction is progressing.

“Design/build is our preferred method as we were founded as a design/build contractor in 1962, but we will act in whatever capacity our client prefers,” noted Guerra.

American Excelsior's current 77,000

square foot manufacturing facility is divided into two separate manufacturing operations and has been operating in Norwalk since 1995. One part of the plant is dedicated to fabricating foam products for the company's flexible foam division, which provides foam

space, noted officials. It became apparent that operating out of one building was no longer feasible, so instead of moving the operation to a new location, the decision was made to build another manufacturing plant on land the company already owns in Norwalk.

The new building will be 60,000 square feet and will solely be devoted to the production and fabrication of flexible foams. According to American Excelsior, this will allow the company to use the current 76,882 square foot building to produce and warehouse products for the earth science division.

The company previously announced a series of investments at several of its locations nationwide last fall. This new construction is further evidence of the company's commitment to the industries it serves and continuous effort to support its 133-year history, noted officials.

“We have experienced strong growth over the past couple of years and we have simply outgrown our current building. We are excited to develop a workable plan to build on the current property, as it prevents us from relocating. Our associates help make the difference in the markets we serve and expanding right here in Norwalk is a win-win for us, our associates, and the local community,” said Poignon. “We recently expanded our wage range for current associates and have begun recruiting to support our growth. We're excited to say American Excelsior in Norwalk is hiring.”

products used in packaging, furniture, medical, and other industries. The other manufacturing operation produces a variety of products used in the construction industry to help erosion control and sediment runoff products as part of American Excelsior's earth science division.

Over the past year, both divisions have experienced strong growth, which has resulted in the need for additional equipment and



Benjamin Little | Field Technology Sales
330-607-6622 | BJL@BPOhioValley.com

Regional Office
3637 Briarfield Blvd. | Maumee, OH 43537
Ph: 419-243-7271 | INFO@bpohiovalley.com



- Construction Layout
- 3D Laser Scanning
- BIM/VDC Services








SITWORK



CONCRETE WORK



STEEL ERECTORS



CARPENTRY

Design Build General Contractor

www.ClouseConstruction.com

419-448-1365

New Riegel, OH









INTEGRATED MULTI-CRAFT CONTRACTORS

RMF Nooter is now Nooter Toledo.
We provide Mechanical & Electrical contracting services to the region.

- > Design / Build
- > Machinery Moving & Setting
- > Rotating Equipment
- > Rigging & Heavy Lifting
- > Pressure Vessels, Boilers, Tanks
- > Piping & Plumbing
- > Electrical
- > Welding & Fabrication
- > Structural Steel
- > Material Handling Systems

Mary Gregory
419-512-0056

Traci Hernandez
419-574-2085



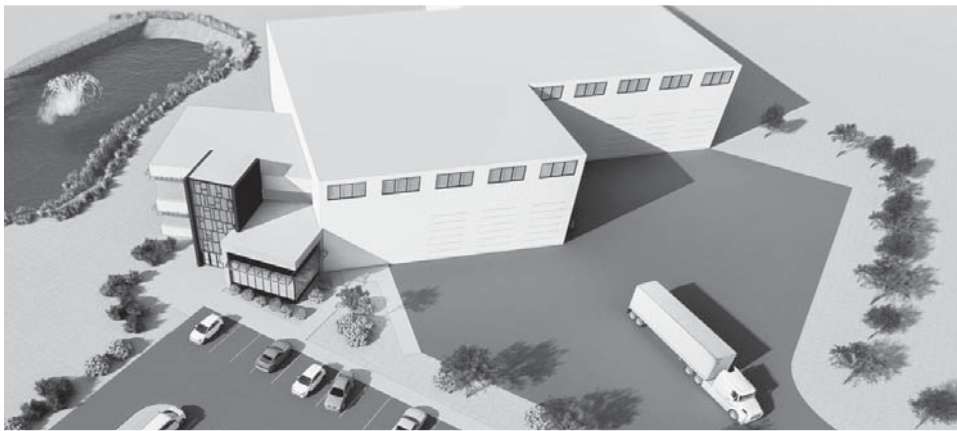
TOLEDO

NOOTER.COM

Building relationships
project after project.
Since 1946

A.A. Boos & Sons, Inc.
General Contractor
Industrial · Commercial

2015 Pickle Road | Oregon, Ohio 43616
p. 419.691.2329 | f. 419.691.2057
www.aaboos.com



thejdi group
architects & engineers

BETTER TOGETHER
Proud of our Design-Build Partnerships

360 W. Dussel Drive, Maumee, OH 43537 | 419.725.7161 | www.thejdigroup.com

Lathrop

AS WE CONTINUE TO CELEBRATE IN 2021

For the last 125 years, the Lathrop Company has had the honor of building Toledo's future. A lot has changed since our founding in 1895, but our values, vision and dedication have remained the same. As we continue to celebrate this milestone in 2021, we will reflect on who we are, what we've done and how we've played an integral role in the building of Toledo's past, present and future.

Join us at www.lathrop125.com



10 reasons why the design/build delivery method works

Article provided by Performance Services and written by Steve Savoie, design process leader.

Design/build construction accounts for 40% of all non-residential construction. There is a reason for that. Unlike the design/bid/build delivery method, the design/build delivery method brings both design and construction functions together as one team in a single contractual entity to the owner. There are several benefits to this method of completing construction and renovation projects. Here are the top reasons why the design/build delivery method works:

the design/build world. Design/build focuses on results, not excuses.

3. Continuity:

A design/build firm is involved in the project from start to finish, which adds an inherent efficiency and effectiveness to the process. The chance of items being overlooked is greatly diminished.

4. Expertise:

Design/build firms are experts in both fields – design and construction. The principals should be licensed architects with formal architectural training and experience in the architecture field. They should also have

COMPARISON OF PROJECT DELIVERY METHODS

METRIC	DESIGN-BUILD VS. DESIGN-BID-BUILD	DESIGN-BUILD vs. CM@R
UNIT COST	6.1% lower	4.5% lower
CONSTRUCTION SPEED	12% faster	7% faster
DELIVERY SPEED	33.5% faster	23.5% faster
COST GROWTH	5.2% less	12.6% less
SCHEDULE GROWTH	11.4% less	2.2% less

Source: Construction Industry Institute (CII)/Penn State research comprising 351 projects ranging from 5,000 to 2.5 million square feet. The study includes varied project types and sectors.



1. Teamwork:

The design/build team and the owner are in this together, and they have the same goal – to complete a successful project that meets or exceeds the owner's expectations. When teams encounter challenges on a project (and there are always challenges), pointing fingers is not an option. Instead, everyone rolls up their sleeves and works on solutions together.

2. Total accountability:

One entity, the design/builder, is accountable for the entire project, including how the end result looks, how much it costs, and how quickly it is completed. When the same group that designs the project also builds the project, much more attention is given to pricing and scheduling in the design phase. The costs of all aspects of the project are taken into account early on in the process; all fees, construction costs, utilities, landscaping allowances, and all other costs are considered.

Unfortunately, it is not unusual to hear about situations in design/bid/build where the cost of the project is twice as much or more than the designer said it would be. Such a scenario is entirely unacceptable in

professional experience in construction and understand pricing, sequencing, and how buildings come together. Expert design/build firms are knowledgeable of general construction and have strong, lasting partnerships with reliable subcontractors.

There is a tremendous advantage to working with architects who can think like builders and builders who can think like architects, but design/build is a commitment. A firm must be dedicated to the design/build process to ensure high-quality results and 100% customer satisfaction.

5. Professional guides:

We have all heard the stories of design and construction getting out of hand and messy. However, design and construction should not be chaotic or stressful. The design/builder acts as a trusted advisor to owners throughout the construction process, guiding the way to the best possible outcome. Design/build refines a process from beginning to end and manages the chaos into orderly steps.

6. Owner involvement:

Design/build operates under the assumption that the owner actually wants to be an (...continued on page 13)

First Solar

...Continued from page 10

when available, is also expected to help mitigate the challenges currently being experienced in the global ocean freight market, by reducing the transoceanic gap between international supply and domestic demand.

“We have said that we stand ready to support President Biden’s goal to transition America to a clean, energy-secure future, and our decision to more than double our US manufacturing capacity with this new facility is First Solar making good on that commitment,” said Mark Widmar, chief executive officer, First Solar. “This facility will represent a significant leap forward in photovoltaics manufacturing, a true factory of the future. It will leverage our advantaged position at the intersection of efficiency, energy yield, optimized form factor, and cost competitiveness, while leading our manufacturing fleet in delivering the highest efficiency and wattage, and the lowest cost per watt.”

“A global leader in solar technology, First Solar has deep roots in the Toledo / north-west Ohio region. We are proud of the company’s existing presence and long-term commitment to this area. We look forward to supporting First Solar’s expansion plans in

bringing new, high-tech jobs to the rapidly evolving clean energy industry as the company continues to grow its Northwest Ohio footprint,” said the Regional Growth Partnership (RGP).

According to officials, the facility will be one of the most advanced of its kind in the solar industry, allowing First Solar to produce an anticipated average of one module roughly every 2.75 seconds across its three-factory Ohio footprint once it achieves its full production capacity. The facility will combine highly skilled workers with Industry 4.0 architecture, machine-to-machine communication, artificial intelligence (AI), and Internet of Things (IoT) connectivity to produce a higher degree of automation, precision, and continuous improvement.

“While designing and building this factory of the future we’re challenging ourselves to focus on the continuous improvement of our throughput, quality, and safety through automation without losing sight of our greatest strength – our people,” said Mike Koralewski, chief manufacturing operations officer, First Solar. “We see this as an opportunity for our associates to upskill, learn new technologies, continue to grow,

and develop themselves as our factories and products continually evolve.”

Meanwhile, Widmar noted that First Solar continues to evaluate opportunities to further expand its global manufacturing footprint and said, “Looking forward, strong demand for Series 6, a compelling technology roadmap, a strong balance sheet, and a largely fixed operating expense cost structure, are each catalysts as we evaluate the potential for future capacity expansion. While we have made no such decisions at this time, we are continuing to evaluate the potential for further domestic and international expansion.”

According to First Solar, its advanced thin film PV modules, designed and developed at its R&D centers in California and Ohio, set industry benchmarks for quality, durability, reliability, design, and environmental performance. Each module features a layer of Cadmium Telluride (CadTel) semiconductor that is only 3% the thickness of a human hair and the company continues to optimize the amount of semiconductor material used by enhancing its vapor deposition process. First Solar also operates an advanced recycling program that recovers more than 90% of CadTel for use in new modules. In addition to its Ohio manufacturing facilities, First Solar also operates factories in Vietnam and Malaysia.



Do More With Mosser.

- ✓ Full-Service Construction Company
- ✓ Capital Improvements Budgeting
- ✓ Site Optimization Support
- ✓ Metal Building Experts
- ✓ Experienced Self-Performing Workforce
- ✓ 100% Employee Owned

Follow us



mosserconstruction.com

Design/build method

... Continued from page 12

active participant in the design and construction of their building. By being involved in the process, owners can guarantee that their goals will be accomplished and that their wishes will be achieved. Such an involvement gives owners a lasting sense of pride in their building.

7. Collaboration:

Design/build cuts out the big egos so common in the design industry. In design/build, the owner retains total control over the project, and the team is there to empower and collaborate with them.

8. Open, honest, and frequent communication:

Design/build is transparent because owners understand the process and know what is going on at all times. The best partnerships work not because people say what everyone wants to hear, but because they say what everyone needs to hear. Through clear communication, the budget is defined early

on, and it becomes the agreement for the entire project.

9. Time Savings:

Design and construction involve managing hundreds of timelines that need to coordinate in lockstep. Design/build creates opportunities for owners to contemplate major decisions, ask questions, and consider their options. Anything the team can do to avoid taking steps backward is going to lead to better, faster, and more cost-effective results. The design/build system is highly adaptive and responsive in the field. Big decisions can be revisited during construction without change orders or additional fees. Although the conventional story is that making changes costs money, that is not necessarily so in design/build.

10. Cost savings:

Inherent to the design/build model is a savings of approximately 6% of the project costs.

There are several reasons why the design/build delivery method works so well for new construction and major renovation projects, including many others not listed here.

This article can be found at <https://bit.ly/35DgJ14>



Specializing in
General Contracting
Construction Management
Design/Build

THE DELVENTHAL
COMPANY

419-244-5570
www.thedelventhalco.com

DEPENDABLE. FLEXIBLE. CREDIBLE.

UNDER CONSTRUCTION

A LOOK AT CONSTRUCTION PROJECTS IN OUR REGION



Buckeye State Bank

The Delventhal Company is serving as general contractor on Buckeye State Bank's new state-of-the-art, 9,200 square foot branch on Eckel Junction Road in Perrysburg, which will replace its existing Maumee branch.

To prepare for the move, the bank will close the Maumee branch later this month and move into a temporary space at Levis Commons in early August.

Completion is scheduled for December.

Toledo Public Schools

Technicon Design Group, Inc. (TDG) is providing services on a health clinic at Waite High School for Toledo Public Schools (TPS).

Village of Oak Harbor

BEC Associates in Port Clinton is providing services on the Benton and Railroad Streets Waterline Project for the Village of Oak Harbor. The project, scheduled for completion this fall, involves the construction of 1,081 lineal feet of waterline, two fire hydrants, and related work.

Wood County

Thomas Porter Architects is providing services on the construction of a new children's residential respite home for Wood County.

St. John the Evangelist Catholic Church

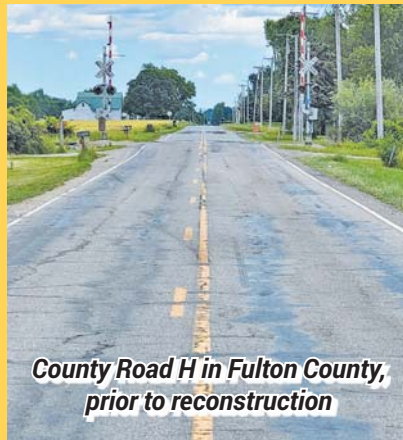
RCM Architects in Findlay is providing services on renovations to St. John the Evangelist Catholic Church in Defiance.

Clay Township

Form & Function Architects, Inc. in Oregon is providing services on a new 6,240 square foot pole barn for Clay Township in Ottawa County.

Toledo-Lucas County Port Authority

The Mannik & Smith Group, Inc. (MSG) is providing services on the expansion of a parking lot at Dana Corporation's Toledo Driveline in the Overland Industrial Park for the Toledo-Lucas County Port Authority (TLCPA).



County Road H in Fulton County, prior to reconstruction

Fulton County

DGL Consulting Engineers, LLC is providing engineering services – including survey, design, and preparation of construction plans – for the widening and reconstruction of County Road H for Fulton County. Vernon Nagel, Inc. is providing construction services on the \$1.2 million project, which is designed to accommodate heavy steel traffic from a new industrial site. Additional work included an at-grade railroad crossing with the Ohio and Indiana Railroad. Completion of the project, which was on a fast track schedule with plans completed within four months of authorization, is scheduled for next month.

For information on submitting your company's major projects to Under Construction, email ahintz@toledobiz.com.

Deadline is the 10th of the month preceding publication. All projects received by deadline will be considered.

2021 SPRINTER CARGO VANS

COPPUS
SINCE 1927

Call Chris Hammond or Rod Cramer
419-447-8131
2190 W Market St, Tiffin, OH
CoppusMercedes.com

CLASSIFIEDS

PHONE: 419.865.0972 • FAX: 419.865.2429 • DEADLINE: 15TH OF MONTH

ACREAGE

3468 DORR ST RIGHT @ BYRNE RD. ROUGHLY 80X250 HIGH VISIBILITY & TRAFFIC COUNTS JUST OFF U OF TOLEDO CAMPUS! NOW \$220,000! CONTACT: DAN DISALLE 419-261-4010 OR DANDISALLE@DISALLEREAL ESTATE.COM

NEAPOLIS-WATERVILLE RD. 48.77 ACRES IN WATERVILLE TOWNSHIP
Close to proposed Meijer site & proposed commercial road.
Near existing industrial park.
LORI GATER 419-340-2480 OR DAN DISALLE, JR. 419-261-4010

ADVERTISING

CALL 419-865-0972 TO PLACE YOUR CLASSIFIED HERE!
\$20 for 20 words, \$0.40 each additional word.
\$5 additional to box the ad. \$5 each bolded line.
\$20 to add a logo or picture.

Surveying & Construction Positioning Solutions

Regional Office
3637 Briarfield Blvd. | Maumee, OH 43537
419-243-7271 | PLI@laserinst.com



Precision Laser & Instrument, Inc.
www.laserinst.com

2021 Mercedes-Benz A-Class

Advanced. Appealing. Attainable.



COPPUS
SINCE 1927

Call Rod Cramer or Chris Hammond
419-447-8131
2190 W Market St, Tiffin, OH
www.CoppusMercedes.com

FAIR HOUSING POLICY

All residential Real Estate advertising in this paper is subject to the Federal Fair Housing Act, which makes it illegal to advertise any preference, limitation or discrimination based on race, sex, religion, handicap, national origin or familial status. This paper will not knowingly accept any advertising for residential real estate which is in violation of the law. All readers are hereby informed that all residential properties advertised in this publication are available on an equal opportunity basis.

TOLEDO BUSINESS JOURNAL

SUBSCRIBE TO
TOLEDO BUSINESS JOURNAL
Visit www.toledobiz.com or call 419-865-0972

BUSINESS CARD NETWORK

Give us a call at 419-865-0972 to find out how you can efficiently reach thousands of readers each month!

"A Name You Can Trust"

HOLT ROOFING CO.

Family Owned and Operated Since 1947

REPAIR SPECIALIST • GUTTERS • COMMERCIAL & RESIDENTIAL
LICENSED IN OHIO & MICHIGAN
www.holtroofing.com

419-478-2900

Firestone BUILDING PRODUCTS
Licensed Red Shield Contractor

Torch Awards of Ethics

RELIABLE BELTING & TRANSMISSION

- V-Belts & Pulleys
- Motors & Gearmotors
- Bearings
- Shaft Couplings
- Conveyor Belting
- Sprockets & Chain
- Conveyors & Automation

t 419-248-2695
rbt1120@att.net

RELIABLEBELTING.COM

PINNACLE ROOFING

PROFESSIONAL REMEDIATION ORGANIZATION
PREFERRED CONTRACTOR
ACCREDITED BUSINESS

ZERO DOWN FINANCING AVAILABLE
GET A NEW ROOF FOR AS LOW AS \$95.00 A MONTH
CALL TODAY FOR A FREE ESTIMATE!

pinnacleroofingllc.net 419-810-4555

Pinnacle Roofing is an independent contractor and is not an affiliate of Owens Corning Roofing and Asphalt, LLC or its affiliated companies.

DiSalle Commercial

For Your Commercial / Investment Needs...
419-893-4415 1909 River Rd., Maumee, Ohio 43537

RETAIL SPACE FOR SALE OR LEASE



AUTOMOTIVE / RETAIL FOR SALE: 368 W. Elm, Wauseon, OH
 Nearly 10,000 square feet on 1.5 acres, retail shops on Elm with high ceilings & a lift in the rear.
ONLY \$249,900
 Contact Dan DiSalle 419-261-4010 or dandisalle@disallerealestate.com

INDUSTRIAL / BUSINESS SPACE FOR SALE



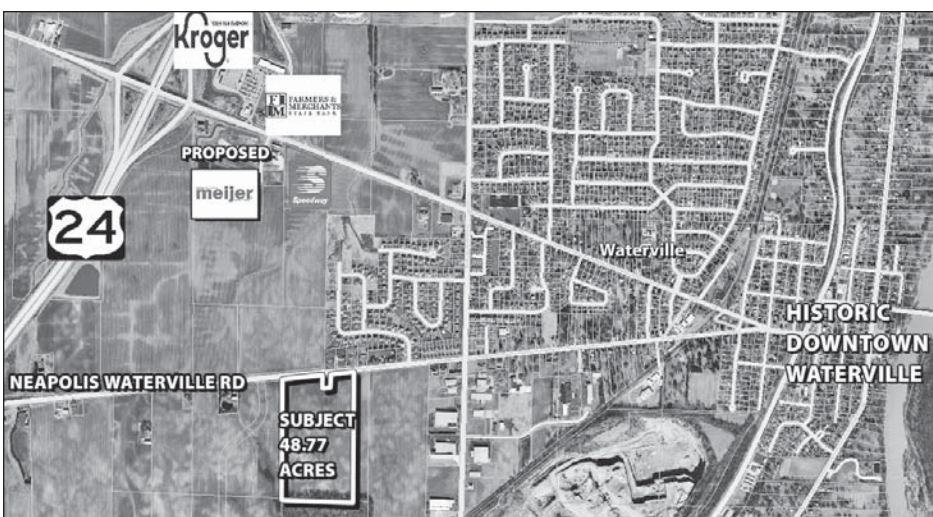
OVER 17,500 SQUARE FEET OF FLEXIBLE SPACE. 6 units in South Toledo off S. Byrne Rd. Ceilings up to 15 ft. w/ overhead doors. Relocate your business and collect some monthly cash flow.
Contact Dan DiSalle 419-261-4010 or dandisalle@disallerealestate.com

OFFICE SPACE FOR SALE OR LEASE



1613 H – BT – SPRINGFIELD TWP.
 3,000 sq.ft. available. Great Access to Interstate. Many Opportunities.
Contact: Bill Thees, 419-893-4415.

DEVELOPMENT PROPERTIES



NEAPOLIS-WATERVILLE RD. 48.77 acres in Waterville Township, close to proposed Meijer site & proposed commercial road. Nearly adjacent to existing industrial park.
Lori Gater 419-340-2480 or Dan DiSalle, Jr. 419-261-4010

JULY SPOTLIGHT



SWAN CREEK NEAR ARROWHEAD.
21,000 SF. FOR SALE OR LEASE



9,040 SF – SYLVANIA TWP
OWNER WILL EXPAND OR DIVIDE. FOR SALE OR LEASE

Contact: Bill Thees
DiSalle Real Estate Co.
Commercial & Investment Division
419-893-4415

ACREAGE FOR SALE

REDUCED!! ANTHONY WAYNE TRAIL CORNER LOT, MAUMEE, OH AT MICHIGAN AVE.
 225x127. Asking \$94,500.
Contact: Dan DiSalle 419-261-4010 or dandisalle@disallerealestate.com.

3468 DORR ST RIGHT @ BYRNE RD. – Roughly 80x250 HIGH visibility & traffic counts just off U of Toledo campus! **Now \$220,000!**
Contact: Dan DiSalle 419-261-4010 or dandisalle@disallerealestate.com.

1/2 ACRE LOT – PERRYSBURG TOWNSHIP.
 180 ft of frontage on Oregon Road just north of St Rt 795, only \$49,900.
Contact: Dan DiSalle, Jr., 419-874-2231 or Joe DiSalle, 419-460-5253.

SYLVANIA TWP – ZONE RD.
 2 Commercial lots. **Contact: Bill Thees, 419-893-4415.**

4 lots DPC – BT – DEER PARK COURT.
 4 Office lots available. Next to Arrowhead, along Swan Creek. Can be combined, split.
Contact: Bill Thees, 419-893-4415.

Visit www.DiSalleRealEstate.com for more information on these properties!

NAI Harmon Group

COMMERCIAL REAL ESTATE SERVICES, WORLDWIDE



We are excited to share that Ed Harmon, Company Founder, has been recognized as a finalist for Entrepreneur of the Year in Michigan and Northwest Ohio! This award recognizes entrepreneurs who have changed their industry and led innovation while lifting up their employees and communities. "It's an honor to be considered for such a prestigious business award," said Ed. We look forward to cheering him on when the winner is announced on August 5!

naiharmon.com

4427 Talmadge Rd. Suite A
Toledo, OH 43623
(419) 960-4410

PROPERTY
MANAGEMENT

COMMERCIAL
REAL ESTATE

LAND
DEVELOPMENT

OVH

...Continued from page 3

by a radio dispatcher. The primary responsibility of the radio dispatcher is to oversee the safety components within the center and disperse safety information as it progresses. In addition to being responsible for safety components, radio dispatchers are also responsible for answering and transferring incoming calls, tracking who is in the facility, directing department heads on how to obtain certain information they are requesting, and serve as a dispatcher for the OVH police department. The communications center is also designated as the primary emergency command center for the Sandusky Home.

OVH plans to begin the renovation this summer, and it is scheduled to be complete in the spring of 2022. The architect for the project is Poggemeyer Design Group and there is no general contractor yet.

"Since we are a State department, we are required to put this project up for bid. That process is underway," said Rapp.

The entire complex at the Ohio Veterans Home in Sandusky is 99 acres and 550,000 square feet. The communications center will be merely one room and 480 square feet of that overall scope – yet a very valuable new area for OVH, noted Rapp.

"Updating our security systems and using advanced technology will enable us to best keep our residents and staff members safe as well as improve communication techniques with first responders. Also it provides another public access point for the Home and ensures that all

who visit or make deliveries to the campus will be well-screened," explained Rapp. "If we were to have an unwanted visitor or encounter an attempted intrusion, we will be able to use sophisticated contact tracing and other technologies that will help us pinpoint any potential danger. The top priority of the Ohio Department of Veterans Services remains providing the very best care, comfort, and safety for all who live and work at the Ohio Veterans Homes."

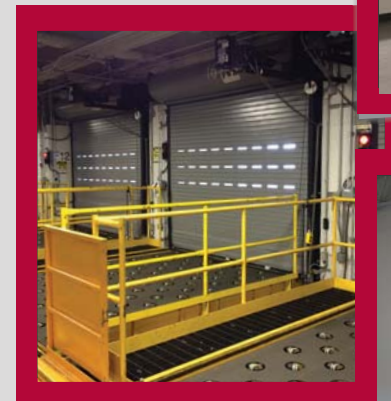
The Ohio Veterans Home in Sandusky is a 427-bed nursing home facility offering two levels of care – standard care for those in need of any intermediate level of care and special care for those with memory care needs. The Home also includes a 208-bed domiciliary for eligible veterans who need medical care but are capable of living independently. The Dom, like the nursing home, has a dining facility and provides medical care and a range of services.

"We are very excited to endeavor into this project and are grateful that public funds will be used to cover the cost. Our new communications center shows a commitment to provide the very best we can for our veterans, staff, and caregivers. Also, this project in no way should be construed as a way to 'wall off' the Ohio Veterans Home from the community that it has been part of since the 1800s. We want to remain welcoming of our guests, loved ones of the residents, volunteers, safety officers, public officials, veterans organizations, and countless others who come to our facility to help brighten the morale of Ohio's heroes. But, as this pandemic has reminded, there is always more we can do to make sure we are providing improved safety as well. This Communications Center continues that mission forward," concluded Rapp.

Quality Overhead Door is your **commercial sales and service experts** and proudly features CornellCookson, the leader in commercial doors for nearly 200 years.

 **QUALITY**
OVERHEAD DOOR

We Sell The Best... & Service The Rest!



CORNELLCOOKSON
The door to building excellence.®



4655 South Ave.; Toledo, Ohio 43615 | 419.578.8700
qualityoverheaddoor.com